

MICRO SWITCH

A DIVISION OF MINNEAPOLIS-HONEYWELL REGULATOR COMPANY
 ROSSFORD, MINNESOTA
 FED. MFR. CODE 91929

SWITCH - BASIC

CATALOG LISTING

BA-2R

PRODUCT CODE: ABF4000

(M) BA-2R
 ISSUE 4

BA-2R
 PAGE 1 OF 1

M

DRAWING NUMBER

REPLACES

RELEASE NO.

23NOV05

RJ

CHECK

22 MAR 56

50 R.R.

O.N.W.

77590

SAD

92159

C.S.L.

21 JAN 98

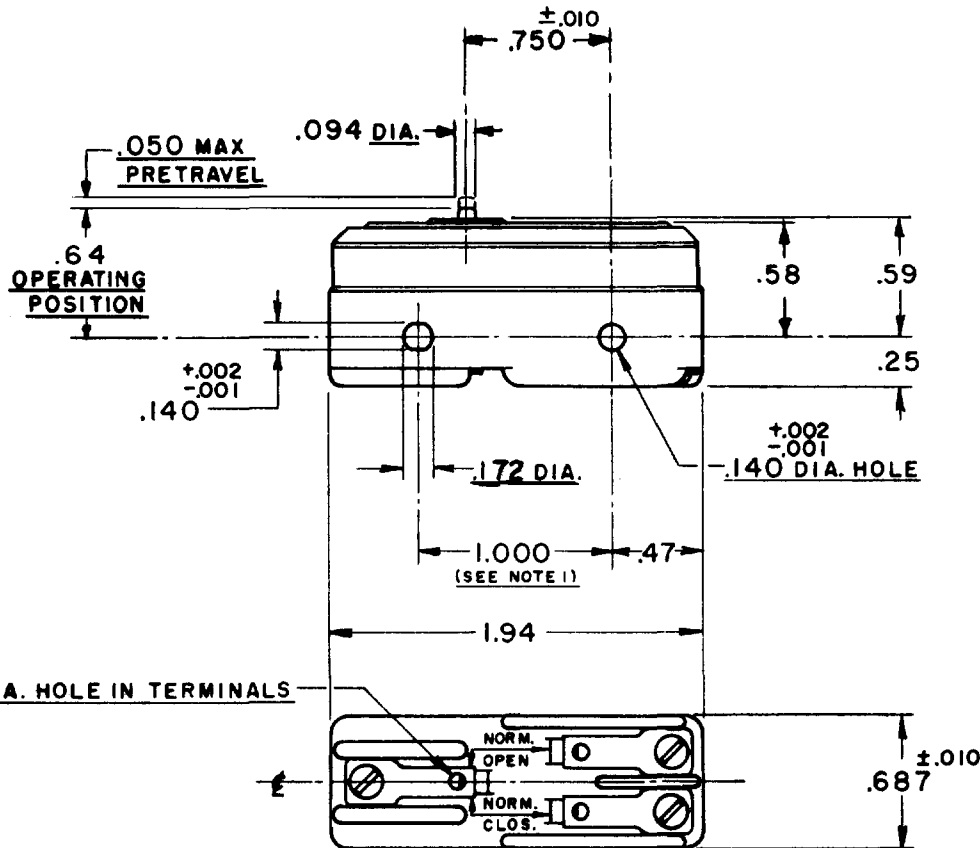
C093346

DLT

94212 - C

DLT

REVISIONS	
A	C.O. 9600
B	K.A.F. 20 MARCH 56
C	O.N.W. 21 AUG. 56
D	CO-77590
E	SAD 9 JUN 94
F	CO-92159
G	C.S.L. 21 JAN 98
H	C093346
I	DLT 21 AUG 98
J	CO-94212 - C
K	DLT 20 SEP 99
L	0016786
M	SPK 23NOV05



NOTE

1- MOUNTING HOLES WILL ACCEPT PINS OR SCREWS OF .139 MAX. DIA. ON 1.000^{+0.002} CENTERS.

THIS DRAWING COVERS A PROPRIETARY ITEM AND IS THE PROPERTY OF MICRO SWITCH, A DIVISION OF HONEYWELL. THIS DRAWING IS NOT TO BE COPIED OR USED WITHOUT THE APPROVAL OF MICRO SWITCH.

CHARACTERISTICS

OPERATING FORCE ----- 14 - 22 OZ.
 RELEASE FORCE ----- 10 OZ. MIN.
 DIFFERENTIAL TRAVEL ----- .002 - .0075
 OVERTRAVEL ----- .010 MIN.

ELECTRICAL DATA

CONTACT ARRANGEMENT S.P.D.T.	BREAK DISTANCE 020 MIN.
L23	20A 125, 250 OR 480 VAC 10A 125 VAC "L"
L288	1HP 125 VAC, 2HP 250 VAC
L308	1/2A 125 VDC, 1/4A 250 VDC
L315	

SCALE - FULL

DO NOT SCALE PRINT

UNLESS OTHERWISE SPECIFIED
 DIMENSIONS ARE IN INCHES
TOLERANCES ARE:
 ONE PLACE (.0) ±.030
 TWO PLACE (.00) ±.015
 THREE PLACE (.000) ±.005
 ANGLES ±

WEIGHT 050 LB.

FORMTEK

DRAWN

K.A.F. 20 MARCH 56

